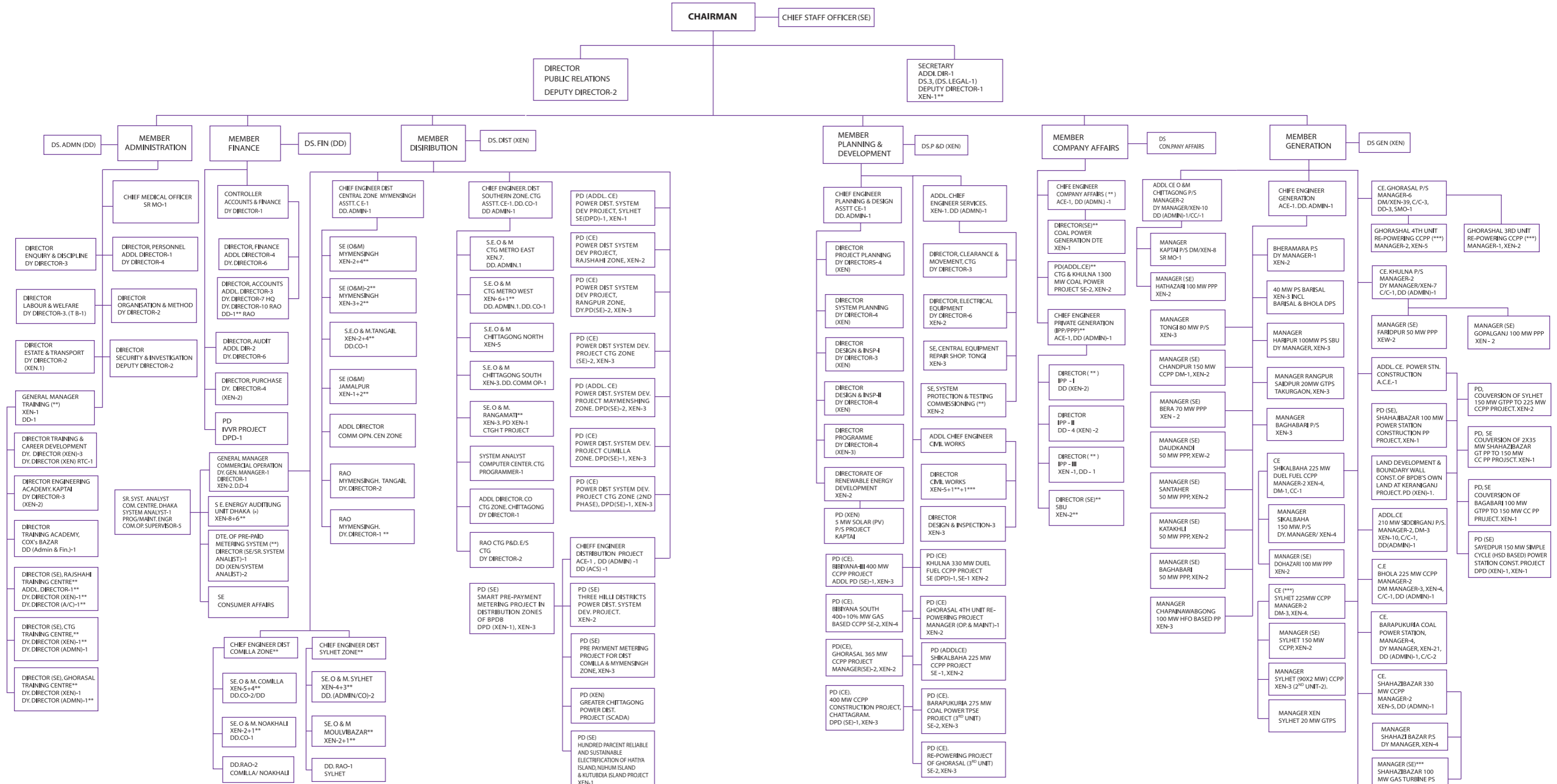


ORGANISATION CHART OF BANGLADESH POWER DEVELOPMENT BOARD

(SHOWING POSITION DOWN TO XEN / DD AND EQUIVALENT)

As on June, 2023



SUMMARY (INCLUDING PROJECTS)

CHAIRMAN-1, MEMBER-6, CHIEF ENGINEER-25+4**, G.M./ADDL. CHIEF ENGINEER-9+2**
 CONTROLLER-1, CMO-1, MANAGER/DIRECTOR (TECH)/SE/DGM-105+14**, SR.SYSTEM ANALYST-1+1**,
 SECRETARY/DIRECTOR (NON TECH)-13+1**, ADDL.DIRECTOR-13+1**,
 XEN/DD/DS/DM-341+55** DD (NON TECH)-114+9**, SYSTEM ANALYST-2+1**
 PRO/M.E/COMPUTER OPERATION SUPERVISOR-6, CC-11, SMO-4

TOTAL SANCTIONED STRENGTH- 18,488

- (*) THERE IS NO APPROVAL OF THE GOVERNMENT AFTER 30 JUNE 1991 FOR THE OFFICES UNDER ENERGY AUDITING UNIT.
- (**) THERE IS NO APPROVAL AS YET FROM THE GOVERNMENT.
- (***) SET-UP ISSUED FROM APPROVED PP PROVISION AS PER REQUIREMENT THE MANPOWER OF ABOVE STARS (*, **, ***) ARE NOT INCLUDING IN THE SET-UP STRENGTH.